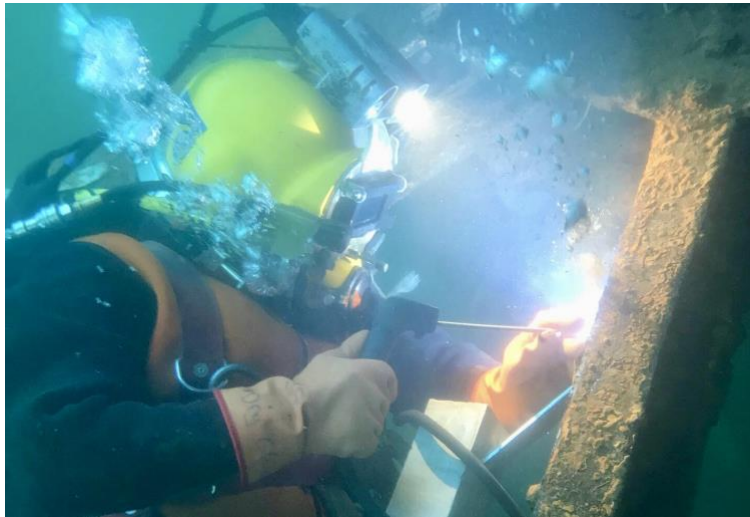




Crux Diving Inc. Safety Commitment

Safety is at the core of Crux Diving Inc.

Strictly adhering to **ADCI, OSHA, WISHA, U.S.N., US ACOE**, and **LR** guidelines, we begin and end our day guided by safe practices.



Crux Diving Safety Practices includes:

- Adhering to our manual of safe practices in diving operations
- Following industrial codes of safe operating practices
- Following government rules and regulations that pertain to safe practices at work
- Ensuring that all employees have access to and are knowledgeable of Crux Diving Inc.'s safe practice manual
- Adhering to related injury, illness and prevention plans, policies and procedures that apply to dive operations.
- Ensuring that all staff are practicing according to our safety plan
- Ensuring that all related certifications are up to date and readily available as needed
- Holding safety meetings daily and as needed.

Here at Crux Diving, we work as a team with shared goals. Each team member is clear about their mission as it relates to safety.

Our diving supervisors are highly trained, experienced and professional divers.

Signed,
Crux Diving Inc. Safety Team